



MS CSAV MARESIAS ex Etha Rickmers

Type of vessel: Container Ship, Flag*: Marshall Island, Master*: EU (e.g. polish)
 Crew*: Filipino, Language on board: English, Built: 03/1996, TDW: 23041 metric tons
 Length: 184 m, Breadth: 25 m, Speed: approx. 18 knots

*Information is subject to change without notice!

Trading area: **Mediterranean – South America West Coast – Mediterranean**
Round trip duration about 62 days / Livorno-San Antonio about 30 days
 Port Rotation (Attention: ports are subject to change!): Livorno/Italy, Vado Ligure/Italy, Barcelona/Spain, Valencia/Spain, Rio Haina/Dominican Republic, Cartagena/Columbia, Panama Canal Transit, Callao/Peru, San Antonio/Chile, Antofagasta / Chile; Puerto Angamos / Chile, Callao/Peru, Panama Canal Transit, Cartagena/Columbia, San Juan/Puerto Rico/ USA, Valencia/Spain, Salerno/Italy, Livorno/Italy

PUBLIC FACILITIES ON BOARD:

There is a multi-system TV and Video- and DVD-Player available to passengers in the officer's recreation area on Deck 1. Passengers also share the dining room with the officers, which is adjacent (divided by a partition) to the officer's recreation area on the 1.Deck.



The pictures of officer's recreation room as well as recreation room were taken on Etha Rickmers, Dining room on sister vessel Christa Rickmers.

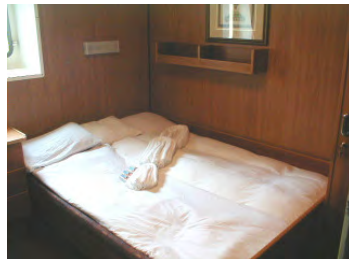
Deck chairs could be provided. The laundry room is situated on the 4th Deck and passengers share washer and dryer with the ship's officers. Towels and bed linen will be provided. The steward attends to cabin cleaning at least once a week. The ship public areas in the superstructure are air-conditioned. Voltage onboard is 220V / 60 Hz. Currency: US-Dollars

PASSENGER ACCOMODATION: DOUBLE CABIN “SUPERCARGO”

This cabin, which provides occupancy facilities for two passengers, is fully carpeted and provided with a private shower and WC. The supercargo cabin is further equipped with a multi-system TV, video/DVD player and a mini-audio unit with CD / tape player and AM/FM radio. Please consider that a short-wave receiver is not available in this passenger cabin. Further accommodation details of the cabin are given below.



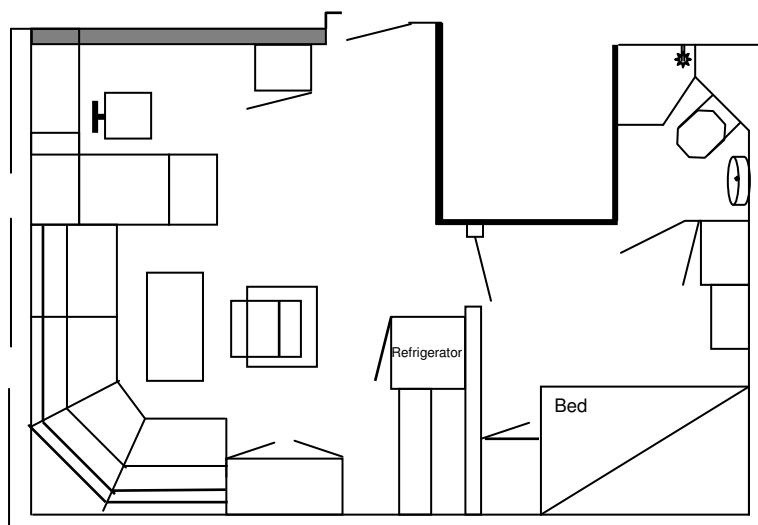
This cabin complex, that offers two separate rooms, one set as a **bedroom** and a second one as **living room**, measures including the bathroom approx. 18 square meters. The living room is arranged with a sofa and a coffee table, also with a desk and chair, a shelf, a cupboard, a cabinet with drawers, one wardrobe/closet and a refrigerator. The two windows face forward and sometimes have obstructed view. Two other windows face to the ship's port side.



The bedroom provides a single bed, measuring approx. 140 x 200 cm, and one beside cabinet with shelf space and a drawer. The bathroom is accessible from the bedroom. The window in this room faces aft wards with partly blocked view by provision cranes.

A more precise arrangement of the cabin can be estimated in the following drawing.

DRAWING OF PASSENGER CABIN



Formalities: The passport must be valid for a minimum of 9 months counting from expected date of embarkation. A tourist visa for the USA is mandatory for all non US- and Canadian citizens and must be available at boarding time! Passengers are further responsible for checking with respective consulates or embassies of all other countries called and for obtaining required documentation prior to boarding.
Visa requirements may vary depending on the nationality of passengers.

Vaccination: Yellow Fever vaccinations and relevant records (stamps) are required!

These ships do **not have a doctor onboard**. Therefore all passengers, regardless of age, must present **clean medical certificates of health** from their physician prior to boarding, which confirms that they are in good health and able to travel on a freighter without regular medical care. The age limit is 75.

Passengers must further be able to negotiate stairs well because accommodations and public facilities are spread over several decks and there is no elevator.

Fares - next page ...



EURO-FARES FOR PASSAGES ON MS CSAV MARESIAS

(valid for new bookings as of declaration date)

Mediterranean S A W C	Ports (Contract Ticket)		Duration appr. Days Livorno	Cabin/fixe d fare Double		REMARKS Please note !	
	Sign-on	Sign-off		per Person EURO	solo use EURO		
ex Mediterranean	Roundtrip ex/to Livorno / Italy		62	4340	5270	Passenger bookings from SOUTH AMERICA will only be accepted ex SAN ANTONIO / CHILE due to variations in the itinerary depending on cargo requirements. US-VISA required for SAI-LIV voyages!	
	Livorno Italy	San Antonio Chile	32	2100	2550		
		Callao Peru	24	1680	2040		
ex South-America	San Antonio Chile	Livorno	32	2240	2720		

Voyage durations vary. The aforementioned voyage days are approximate figures based on average values.

Please note that actual voyage duration may differ (frequently exceed aforementioned values) due to cargo requirements.

There will be no additional charge if actual voyage happens to be longer and no refund if actual voyage happens to be shorter than a.m. averaged days.

Additional Cost (flat fees per person):	EURO
Port and vessel fees:	230