

FROM ASIA TO NEW ZEALAND



MV TASMAN CAMPAIGNER sails from Singapore via New Caledonia and the Fiji Islands to New Zealand. The return passage leads via Indonesia and Thailand, sometimes the vessel will also call Vietnam and/or Hong Kong. The following passenger services are offered: ex Asia from Singapore to Auckland and ex New Zealand from Tauranga to Singapore. Roundtrips can only be booked ex/to Singapore and Tauranga.



MV TASMAN CAMPAIGNER

Christening Name:	Robert Rickmers	Type of vessel:	Container vessel
Flag *:	Marshall Islands	Captain*:	International
Crew *:	Asian	Language:	English
TDW:	22984 metric tons	Length:	172,36 m
Breadth:	25,30 m	Speed:	approx.19 knots
Built:	06/2003	Voltage:	220 V / 60 Hz
Electric Plugs:	German System	Currency:	US-Dollars
Sister vessels:	none		

*information is subject to change without prior notice!

TRADING AREA AND PORT ROTATION

The following itinerary is subject to alterations without prior notice:

Singapore / Singapore – Noumea / New Caledonia – Lautoka / Fiji Islands - Suva / Fiji Islands – Auckland / New Zealand – New Plymouth / New Zealand - Wellington / New Zealand – Timaru / New Zealand – Tauranga / New Zealand – Hong Kong / Hong Kong – Ho Chi Minh / Vietnam - Jakarta / Indonesia - Sri Racha / Thailand – Singapore / Singapore

PUBLIC FACILITIES ONBOARD

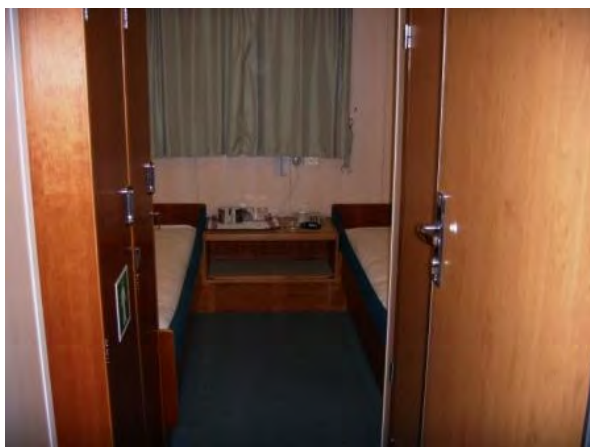
The ship's public areas in the superstructure are air-conditioned. Passengers may share the officer's lounge on the 1st Deck, they also share with the officers the dining room, which is also located on the 1st Deck. Deck chairs are provided. Washer and dryer are available to passengers. Towels and bed linen are also provided. The steward attends to cabin cleaning weekly. Please also note that due to special technical circumstances the vessel is subject to notable vibrations depending on cargo load condition.

PASSENGER ACCOMMODATION

There is presently only one cabin for passengers available. This cabin is carpeted, has private facilities with shower and WC and is further equipped with TV/DVD player and a small audio unit with CD player and AM/FM radio (not short wave). Please also refer to more detailed information below.

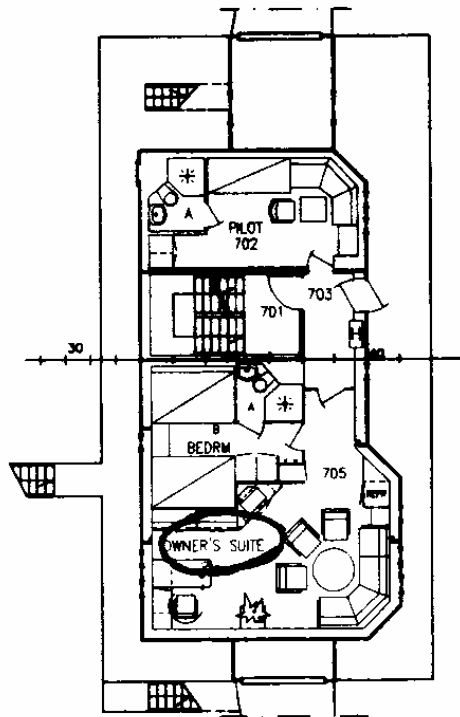
DOUBLE CABIN “OWNER’S” – NO. 705 on the 7th Deck

Double cabin, cabin complex approx. 32 sq.m., with individual sitting and bedroom. The cabin is carpeted and has private facilities. **Sitting room:** The windows face forward and aft and have a unobstructed view. The sitting room features a sofa, a seat, two chairs, corner table and coffee table, a writing desk with chair, shelves, various cabinets and a refrigerator. **Bedroom:** The window faces aft and has a partly obstructed view by the funnel. The bedroom includes two beds, each measuring approx. 90 x 200 cm, a bedside shelf and cabinet, a mirror, a wardrobe/closet and a chest with drawers. The bathroom is accessible from the bedroom.



DRAWING OF THE 7th DECK WITH OWNERS CABIN

7th SUPERSTR. DECK



FORMALITIES

The passport should be valid **at least 9 months** counting from voyage commencement if you are planning a round trip.

Passengers are responsible for checking with respective consulates or embassies of countries called and for obtaining required documentation prior to boarding. Visa requirements may vary depending on the nationality of passengers.

Vaccinations are not compulsory for this voyage. Please contact your medical advisor for more information about recommended vaccinations.

The ship does not have a doctor onboard. Therefore all passengers, regardless of age, must present a clean medical certificate from their physician prior to boarding, which confirms that they are in good health and able to travel on a freighter without regular medical care. The age limit is 75.

Passengers must further be able to negotiate stairs well because accommodations and public facilities are spread over several decks and there is no elevator.

PASSAGE FARES

Please see attached price list to find out about the fares.