

PARTIR EN  
*Cargo*



## PEX 3

ASIA - USA



Port	Day
<b>HONG KONG</b> , Hong Kong	0
<b>SHEKOU</b> , China	1
<b>SHANGHAI</b> , China	4
<b>NINGBO</b> , China	4
<b>PUSAN*</b> , South Korea	7
<b>PANAMA CITY</b> , Panama	26
<b>HOUSTON</b> , USA	31
<b>MOBILE</b> , USA	33
<b>NEW ORLEANS</b> , USA	35

Port	Day
<b>MIAMI</b> , USA	38
<b>JACKSONVILLE</b> , USA	40
<b>SUEZ CANAL</b>	
<b>SINGAPORE</b> , Singapore	73
<b>HONG KONG</b> , Hong Kong	77

\* Only disembarkation is allowed in Pusan

## SHIPS

**British flag :**

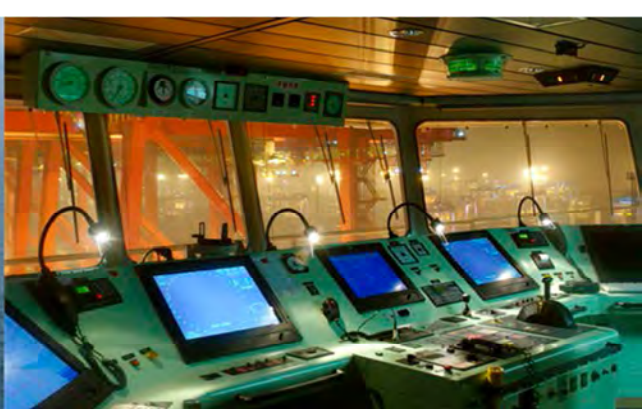
**CMA CGM LAMARTINE**

- **6 500 Teus**

ONLY English spoken aboard the vessel ! (international flag)

## Possibility to connect with the following lines

FAL1 – FAL3 – MEX – PEARL RIVER EXPRESS – ACSA 2



## CABINS & ENVIRONMENT DESCRIPTION AND PRICES

In order to have the ship specifications, cabins and tariffs please see attached documents.

Each cabin has a sitting area with a refrigerator, a desk, a wardrobe, a sofa, a bathroom (WC / shower / washbasin). All cabins are air conditioned.

For journey less than 10 days, the prices will be increased compared to the base price. Reservations can only be made less than 3 weeks before departure subject to availability (please contact us)

### ► **FORMALITIES (compulsory)**

Passport valid more than 6 months after the return date

Visa China - Visa USA  
Yellow fever mandatory

### Special note only for Shanghai :

- **Embarking passenger:** Visa type « M » or « C » mandatory
- **Disembarking passenger:** Visa type « M » mandatory

### Other information:

- **For passenger disembarking in Pusan:** as per new procedures from authorities in Korea, please be informed that you are asked to pay handling fees of USD 100 / 150 for immigration on the spot.
- **For passenger disembarking in Shanghai:** the terminal Yangshan is about 100 kilometers far from Shanghai city; transportation fees about 90 euros (payable on the spot).

**Additional taxes may be applied according to immigration / port agents during embarkation or disembarkation at stopovers; they are to be paid on-site in cash only**

*This information is provided for informational purposes and is not contractual.  
Refer to our general sales conditions*

SHIP	TEU	FLAG	YEAR	COMMON AREAS	CABINE N°	SIZE	BEDS	DOUBLE CABIN (price per person and per day)	SINGLE CABIN (price per day)
CC LAMARTINE	6500	British	2010	Gym, sauna, library, TV	520	15 m <sup>2</sup>	double bed	110 €	120 €
					506	18 m <sup>2</sup>	double bed	110 €	120 €
					516/517	18 m <sup>2</sup> 10 m <sup>2</sup>	double bed	110 €	120 €

*The prices are per person and per day. They are in Euros and include full board and port  
For stay less than 10 days, please contact us*