



MEX

MEDITERRANEAN - ASIA

MEX

Port	Day
FOS SUR MER, France	0
GENOA, Italy	3
MALTA, Malta	6
BEIRUT*, Lebanon	10
JEDDAH*, Arabia Saudi	14
JEBEL ALI, United Arab Emirates	20
PORT KELANG, Malaysia	30
XIAMEN, China	37
QINGDAO, China	40
BUSAN*, South Korea	42

Port	Day
SHANGHAI, China	44
NINGBO, China	46
NANSHA, China	50
YANTIAN, China	51
SINGAPORE, Singapore	55
MALTA, Malta	70
VALENCIA, Spain	74
BARCELONA, Spain	76
FOS SUR MER, France	77

*It's forbidden to embark or disembark in Beirut, Jeddah. It's forbidden to embark in Busan

SHIPS

British flag : 11 000 EVP : CMA CGM MUSCA
 11 400 EVP : CMA CGM ANDROMEDA – CMA CGM CENTAURUS
 CMA CGM CASSIOPEA – CMA CGM COLUMBA
 CMA CGM GEMINI

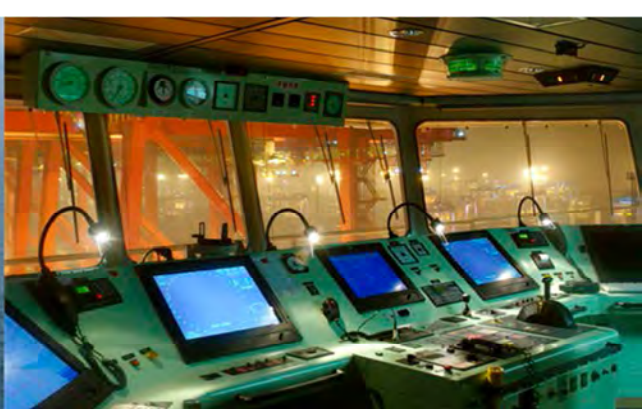
Maltese flag : 11 400 EVP : CMA CGM TITAN – CMA CGM LEO

Singaporean flag : 10 100 EVP : APL GWANGYANG

ONLY English spoken aboard the vessel ! (international flag)

Possibility to connect with the following lines

Columbus Loop – FAL1 – FAL3 – Pacific Express 3



CABINS & ENVIRONMENT DESCRIPTION AND PRICES

In order to have the ship specifications, cabins and tariffs please see attached documents.

Each cabin has a sitting area with a refrigerator, a desk, a wardrobe, a sofa, a bathroom (WC / shower / washbasin). All cabins are air conditioned.

► **FORMALITIES (compulsory)**

Passport valid more than 6 months after the return date

Visa China

Yellow fever mandatory

Return flight ticket to original country to disembark in Port Kelang

Special note only for Yantian :

► **Embarking / disembarking passenger:** Visa type « M » « F » « G » or « D » is mandatory

Special note only for Shanghai :

► **Embarking passenger:** Visa type « M » or « C » mandatory

► **Disembarking passenger:** Visa type « M » mandatory

Other information:

► **For passenger embarking/disembarking in Malaysia:** as per new procedures from authorities in Malaysia, please be informed that you are asked to pay handling fees of around USD 50.00 for immigration on the spot.

► **For passenger disembarking in Shanghai:** the terminal Yangshan is about 100 kilometers far from Shanghai city; transportation fees about 90 euros (payable on the spot).

► **Passengers embarking/disembarking in Yantian :** around USD 100 to be paid on the spot.

► **For passenger embarking/disembarking in Malta:** as per new procedures from authorities in Malta, please be informed that you are asked to pay handling fees of around Euros 30.00 for immigration on the spot

► **For passenger embarking/disembarking in Singapore:** as per new procedures please be informed that you are asked to pay handling fees of around dollars 50.00 on the spot

Additional taxes may be applied according to immigration / port agents during embarkation or disembarkation at stopovers; they are to be paid on-site in cash only

*This information is provided for informational purposes and is not contractual.
Refer to our general sales conditions*

SHIP	TEU	FLAG	YEAR	COMMON AREAS	CABINE N°	SUPERFICIE	BEDS	DOUBLE CABIN (price per person and per day)	SINGLE CABIN (price per day)
CC MUSCA	11000	British	2009	Swimming Pool, gym, library, TV , sauna	604 - 608	32 m²	1 double bed	150 €	170 €
					606	22 m²	1 double bed	130 €	150 €
					Owner	45 m²	1 double bed	160 €	180 €
APL GWANGYANG	10100	Singaporean	2016	Gym, recreation room with TV, Dvd et PS4	Owner 1	18 m²	1 double bed	130 €	150 €
					Owner 2	14 m²	1 double bed		
CC ANDROMEDA CC CENTAURUS CC CASSIOPEA CC COLUMBA CC GEMINI	11400	British	2009	swimming pool, gym, library, TV	701 - 708	29 m²	twin bed	150 €	170 €
					702 - 709 - 712	21 m²	1 double bed	130 €	150 €
CC TITAN CC LEO	11400	Maltese	2011	swimming pool, gym, Lounge, TV	701 - 708	29 m²	2 twin bed	150 €	170 €
					702 - 709 - 712	21 m²	1 double bed	130 €	150 €

The prices are per person and per day. They are in Euros and include full board and port taxes
For stay less than 10 days, please contact us