

PARTIR EN  
*Cargo*

## FRENCH WEST INDIES

France - French West Indies



Port	Day
DUNKERQUE, France	0
ANTWERP, Belgium	1
LE HAVRE, France	2
MONTOIR DE BRETAGNE, France	4
POINTE A PITRE, Guadeloupe	13
FORT DE FRANCE, Martinique	15
POINTE A PITRE, Guadeloupe	18
DUNKERQUE, France	28

## SHIPS

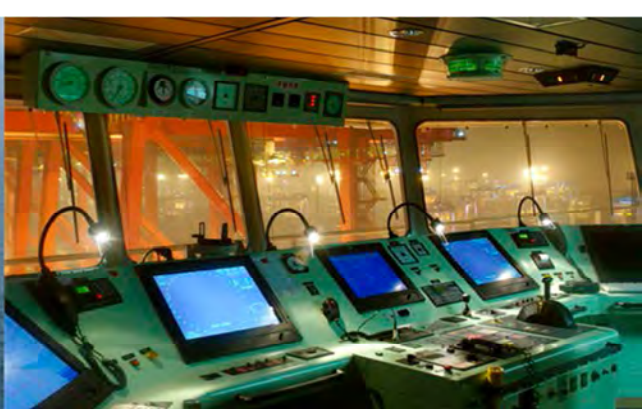
2 200 Teus

**French flag :**

FORT ST GEORGES  
FORT STE MARIE

FORT ST LOUIS  
FORT ST PIERRE

Frequency : weekly.



## CABINS & ENVIRONMENT DESCRIPTION AND PRICE

In order to have the ship specifications, cabins and tariffs please see attached documents.

Each cabin has a sitting area with a refrigerator, a desk, a wardrobe, a sofa, a bathroom (WC / shower / washbasin). All cabins are air conditioned.

For journey less than 10 days, the prices will be increased compared to the base price. Reservations can only be made less than 3 weeks before departure subject to availability (please contact us)

### ► FORMALITIES (compulsory)

Passport valid during all the trip.

### PRICES for CARS

Upon request, it is possible to load a car (or motorbike ..) aboard a vessel.

In order to get a cotation, please contact directly: [lhv.jlnicolle@cma-cgm.com](mailto:lhv.jlnicolle@cma-cgm.com) (Tel: +33.235.195.530)

For sailing from Guadeloupe : [ptp.mbellemare@cma-cgm.com](mailto:ptp.mbellemare@cma-cgm.com) (Tel: +33.590.255.708)

For sailing from Martinique, [fdf.mfordant@cma-cgm.com](mailto:fdf.mfordant@cma-cgm.com) (Tel: +33.596.553.297)

SHIP	TEU	FLAG	YEAR	COMMON AREAS	CABINS	WINDOWS	SIZE	BEDS
<b>FORT ST GEORGES</b> <b>FORT ST PIERRE</b> <b>FORT STE MARIE</b> <b>FORT ST LOUIS</b>	2200	French	2008	Swimming pool, passengers lounge, library	Europe - Asie (2x90)	1 side window & 1 front window	17 m <sup>2</sup>	twin bed
					Transatlantique (2x110)	1 front window		
					Méditerranée (2x110)	1 front window		
					Tour du Monde (2x90)	1 side window & 1 front window		
					Amérique du Sud Océan Indien	1 front window	17 m <sup>2</sup>	Single bed
Owner	2 side windows	25 m <sup>2</sup>	twin bed					

TRIP	DOUBLE CABIN (price per person)	SINGLE CABIN
One Way or Return	1 200 €	1 300 €
one Way or Return in owner cabin	1 300 €	1 800 €
Roundtrip	2 300 €	2 400 €
roundtrip in owner cabin	2 400 €	2 700 €
Inter Islands	200 €	300 €
Inter Islands - non residents	80 €	90 €

Nota : \* going : to disembark in POINTE A PITRE 2e stop, extra charge of 250 € per person.  
Return : to embark in Pointe à Pitre 1st stop, extra charge of 250 € per person

\* Possibility of open ticket (validity 1 year after the departure date)