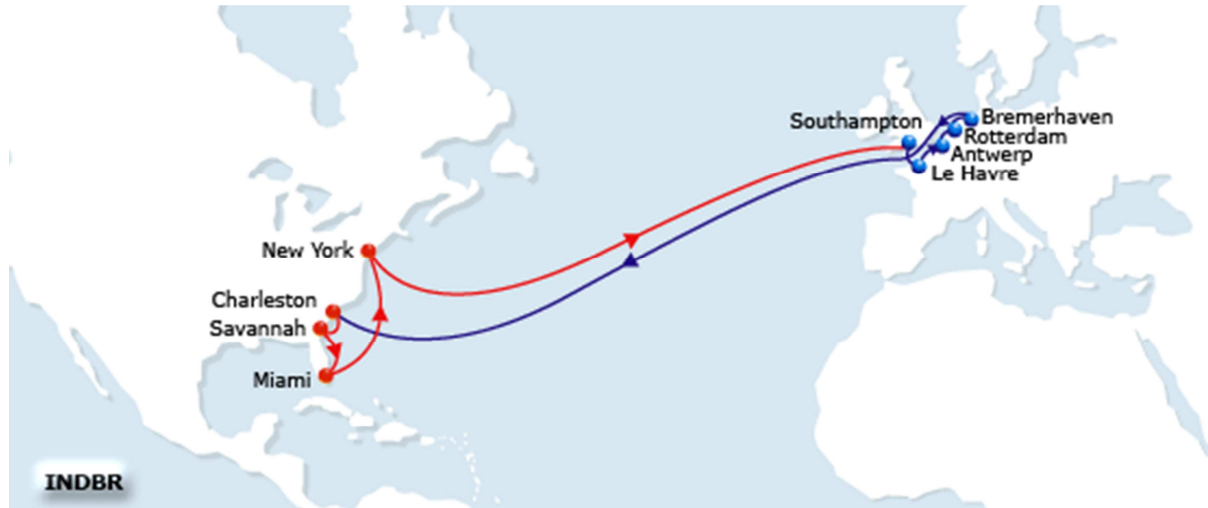


PARTIR EN
Cargo

INDEPENDENCE BRIDGE

EUROPA - USA



Port	Day
LE HAVRE, France	0
ANTWERP, Belgium	1
ROTTERDAM, The Netherlands	2
BREMERHAVEN, Germany	5
CHARLESTON, United States	16
SAVANNAH, United States	18

Port	Day
MIAMI, United States	20
NEW YORK, United States	23
SOUTHAMPTON, United Kingdom	33
LE HAVRE, France	35

SHIPS

Panama flag

5 100 Teus

CMA CGM ALCAZAR

Cyprus flag

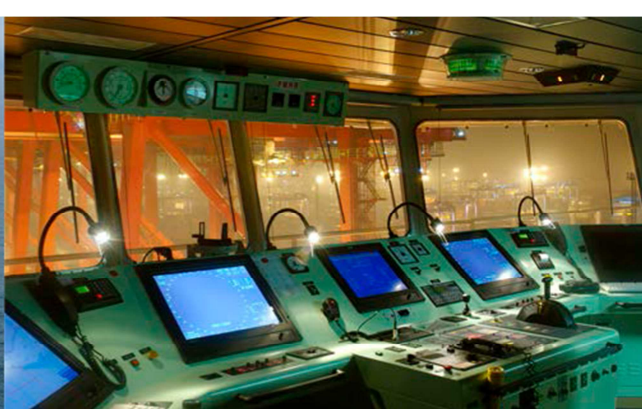
5 100 Teus

CMA CGM CHATEAU D'IF

ONLY English spoken aboard the vessel ! (international flag)

Possibility to connect with the following lines

LIBERTY BRIDGE – AMERIGO – VICTORY – COLUMBUS JAX – PEX3 – PEARL RIVER



CABINS & ENVIRONMENT DESCRIPTION AND PRICES

In order to have the characteristics of the ship, cabins and the prices, thank you kindly refer to the attached annex.

Each cabin has a sitting area with a refrigerator, a desk, a wardrobe, a sofa, a bathroom (WC / shower / washbasin). All cabins are air conditioned.

► **FORMALITIES (compulsory)**

Passport valid more than 6 months after the return date.

US visa

Additional taxes may be applied according to immigration / port agents during embarkation or disembarkation at stopovers; they are to be paid on-site in cash only

*This information is provided for informational purposes and is not contractual.
Refer to our general sales conditions*

SHIP	TEU	FLAG	YEAR	COMMON AREAS	CABIN N°	SIZE	BEDS	DOUBLE CABIN (price per day per person)	SINGLE CABIN (price per day)
CC ALCAZAR	5100	PANAMA	2008	Sauna, gym, library, TV&DVD	Owner	26 m ²	Double bed	140 €	160 €
					Radio Officer	12 m ²	Single bed		150 €
CC CHÂTEAU D'IF	5100	CYPRUS	2008	Sauna, gym, library, TV&DVD	Owner	26 m ²	Double bed	140 €	160 €
					Radio Officer	12 m ²	Single bed		150 €

The prices are per person and per day. They are in Euros and include full board and port taxes