

PARTIR EN  
*Cargo*



## VICTORY

EUROPA - USA



Port	Day
LE HAVRE, France	0
ANTWERPEN, Belgium	1
ROTTERDAM, The Netherlands	2
BREMERHAVEN, Germany	4
MIAMI, United States	17
VERACRUZ, Mexico	21

Port	Day
ALTAMIRA, Mexico	22
HOUSTON, United States	25
NEW ORLEANS, United States	28
LE HAVRE, France	42

## SHIPS

**Singapore flag**

**5 800 Teus**

APL HOLLAND

**British flag**

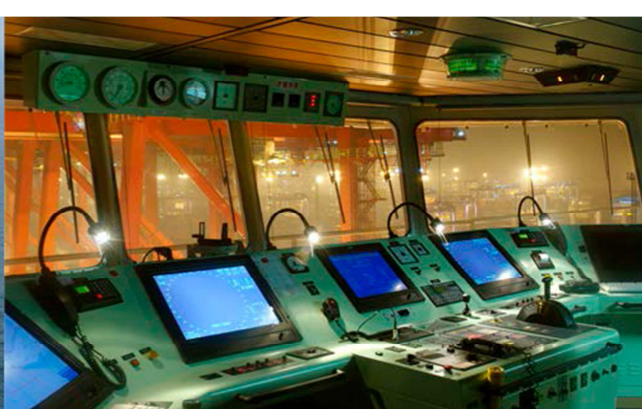
**5 100 Teus**

CMA CGM WHITE SHARK

ONLY English spoken aboard the vessel ! (international flag)

## Possibility to connect with the following lines

SAX – COLUMBUS JAX – PACIFIC EXPRESS 3 – AMERIGO – LIBERTY – FAL1 - FAL3



## CABINS & ENVIRONMENT DESCRIPTION AND PRICES

In order to have the characteristics of the ship, cabins and the prices, thank you kindly refer to the attached annex.

Each cabin has a sitting area with a refrigerator, a desk, a wardrobe, a sofa, a bathroom (WC / shower / washbasin). All cabins are air conditioned.

For journey less than 10 days, the prices will be increased compared to the base price. Reservations can only be made less than 3 weeks before the departure subject to availability.(please contact us).

### ► **FORMALITIES (compulsory)**

Passport valid more than 6 months after the return date.

US visa

Mexico Visitor's Permit (FMM) : this permit is issued on-site – to be filled out and signed by immigration authorities in order to disembark in Mexico and during stopovers. Approximate fee: 30 USD - paid on site in cash only

### Other information:

► **Passengers embarking/disembarking in Veracruz** : An amount of 150 USD will be asked for passengers embarking / disembarking in Veracruz. To be paid directly on the spot and in cash only. This amount includes the fees for the transportation from the vessel to the city and the cost for the formular FMM as well. Taxis are not allowed to enter Terminal.

**Additional taxes may be applied according to immigration / port agents during embarkation or disembarkation at stopovers; they are to be paid on-site in cash only**

SHIP	TEU	FLAG	YEAR	COMMON AREAS	CABINE N°	SIZE	BEDS	DOUBLE CABIN (price per day and per person)	SINGLE CABIN (price per day)
<b>CC WHITE SHARK</b>	5100	British	2009	Gym, library, swimming pool, TV&DVD	704	14 m <sup>2</sup>	Double bed	110 €	120 €
					611	21 m <sup>2</sup>	Double bed		
					601	21 m <sup>2</sup>	2 twin beds		130 €
<b>APL HOLLAND</b>	5 800	Singapore	2015	Gym, passengers lounge with TV, DVD and PS4	503	20 m <sup>2</sup>	single bed		100 €

*The prices are per person and per day. They are in Euros and include full board and port taxes  
For stay less than 10 days, please contact us*