

PARTIR EN
Cargo



**EUROPE -
BRAZIL**



Port	Day
LE HAVRE, France	0
PHILIPSBURG, Netherlands Antilles	10
PORT OF SPAIN, Trinidad and Tobago	11
DEGRAD DES CANNES, French Guyana	15
VILA DO CONDE, Brazil	20
FORTALEZA, Brazil	23
NATAL, Brazil	25
ALGECIRAS, Spain	35

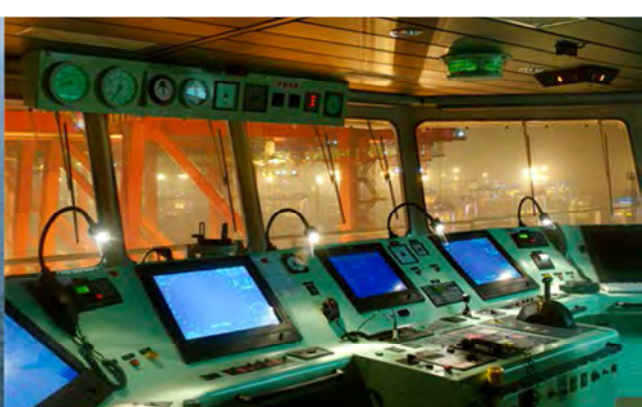
Port	Day
LONDON, UK	39
ROTTERDAM, The Netherlands	40
LE HAVRE, France	42

SHIPS

British flag **2 140 Teus :** CMA CGM ST LAURENT – CMA CGM MARSEILLE
CMA CGM CAYENNE

ONLY English spoken aboard the vessel ! (international flag)

Frequency: weekly.



CABINS & ENVIRONMENT DESCRIPTION AND PRICES

In order to have the ship specifications, cabins and tariffs please see attached documents.

Each cabin has a sitting area with a refrigerator, a desk, a wardrobe, a sofa, a bathroom (WC / shower / washbasin). All cabins are air conditioned.

► **FORMALITIES (compulsory)**

Passport valid more than 6 months after the return date.

Yellow fever mandatory

Other information:

► **For passenger disembarking in Fortaleza:** as per new procedures from authorities in Fortaleza, please be informed that you are asked to pay handling fees of around USD 100.00 and USD 80.00 for immigration. To be paid on the spot in cash only.

Additional taxes may be applied according to immigration / port agents during embarkation or disembarkation at stopovers; they are to be paid on-site in cash only

*This information is provided for informational purposes and is not contractual.
Refer to our general sales conditions*

SHIP	TEU	FLAG	YEAR	COMMON AREAS	CABINS	SIZE	BED	DOUBLE CABIN (price per person and per day)	SINGLE CABIN (price per day)
CMA CGM CAYENNE CMA CGM MARSEILLE CMA CGM ST LAURENT	2140	British	2015	gym -passenger lounge with TV &DVD	705 - 607	11 m²	single bed		110 €
					601 - 611	12 m²	double bed	100 €	

The prices are per person and per day.They are in Euros and include full board and port taxes

PRICES FOR TRIP 12 DAYS DURATION AND UNDER

SHIP	TEU	FLAG	YEAR	COMMON AREAS	CABINS	SIZE	BED	DOUBLE CABIN (price per person and per day)	SINGLE CABIN (price per day)
CMA CGM CAYENNE CMA CGM MARSEILLE CMA CGM ST LAURENT	2140	British	2015	gym -passenger lounge with TV &DVD	705 - 607	11 m²	single bed		140 €
					601 - 611	12 m²	double bed	130 €	

The prices are per person and per day.They are in Euros and include full board and port taxes