

PARTIR EN  
*Cargo*

## COLUMBUS PNW

USA - ASIA



Port	Day
YANTIAN, China	0
XIAMEN, China	1
NINGBO, China	3
SHANGHAI, China	5
PUSAN, South Korea*	7
SEATTLE, USA	19
VANCOUVER, Canada	21
YANTIAN, China	42

\*Embarkation in Pusan is strictly forbidden. Only disembarkation is allowed

## SHIPS

**Singapore flag**

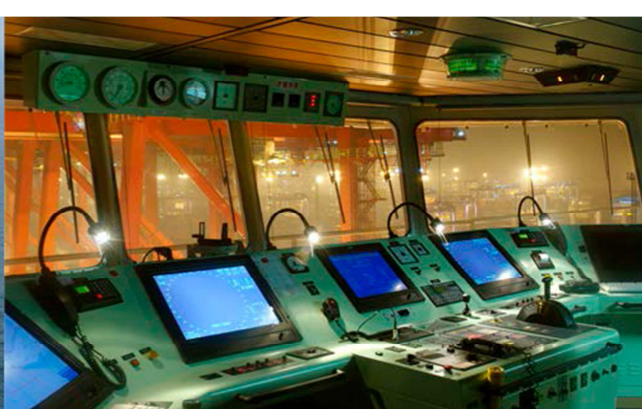
**10 600 TEUS :**

APL SOUTHAMPTON – APL PARIS – APL YANGSHAN  
APL QINGDAO – APL DUBLIN – APL BARCELONA

ONLY English spoken aboard the vessel ! (international flag)

## Possibility to connect with the following lines

FAL1, FAL23, MEX,



## CABINS & ENVIRONMENT DESCRIPTION AND PRICES

In order to have the characteristics of the ship, cabins and the prices, thank you kindly refer to the attached annex.

Each cabin has a sitting area with a refrigerator, a desk, a wardrobe, a sofa, a bathroom (WC / shower / washbasin). All cabins are air conditioned.

For journey less than 10 days, the prices will be increased compared to the base price. Reservations can only be made less than 3 weeks before the departure subject to availability.(please contact us).

### ► **FORMALITIES (compulsory)**

Passport valid more than 6 months after the return date.

US visa - Chinese visa

### Special note only for Shanghai :

► **Embarking passenger:** Visa type « M » or « C » mandatory

► **Disembarking passenger:** Visa type « M » mandatory

### Special note only for Yantian :

► **Embarking / disembarking passenger:** Visa type « M » « F » « G » or « D » is mandatory

### Other information:

► **For passenger disembarking in Shanghai:** the terminal Yangshan is about 100 kilometers far from Shanghai city; transportation fees about 90 euros (payable on the spot).

► **Passengers embarking/disembarking in Yantian :** USD 100 to be paid on the spot.

► **Passengers disembarking in Pusan :** USD 100 /150 to be paid on the spot.

**IMPORTANT NOTICE :** It may happen that VANCOUVER calls before SEATTLE ; if so, US Visa is mandatory for people embarking in Vancouver

**Additional taxes may be applied according to immigration / port agents during embarkation or disembarkation at stopovers; they are to be paid on-site in cash only**

*This information is provided for informational purposes and is not contractual.  
Refer to our general sales conditions*

SHIP	TEU	FLAG	YEAR	COMMON AREAS	CABINS	SIZE	BEDS	DOUBLE CABIN (price per person and per day)	SINGLE CABIN (price per day)
<b>APL QINGDAO</b>	10600	SINGAPORE	2012	Gym, recreation room with TV and DVD, swimming pool	Owner 1 - Owner 2	15 m <sup>2</sup>	double bed	140 €	160 €
<b>APL SOUTHAMPTON APL PARIS - APL YANGSHAN - APL DUBLIN - APL BARCELONA</b>	10600	SINGAPORE	2012	Gym, recreation room with TV and DVD, swimming pool, sauna	Owner 1 - Owner 2	15 m <sup>2</sup>	double bed	140 €	160 €

*The prices are per person and per day. They are in Euros and include full board and port taxes  
For stay less than 10 days, please contact us*